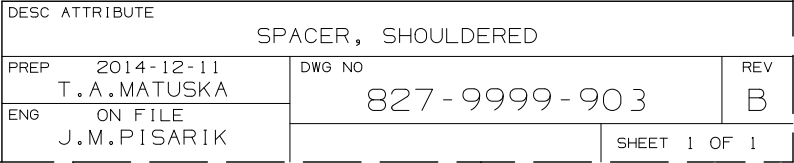


1. MATERIAL: ALUMINUM, ROUND, 6061-T6, IN ACCORDANCE WITH ASTM B211.
2. FINISH: CHROMATE CONVERSION COATING IN ACCORDANCE WITH MIL-DTL-5541, CLASS 1A, TYPE II.
3. SPACE OR USAGE PRECLUDES IDENTIFICATION MARKING, MARK CONTAINER OR TAG IN ACCORDANCE WITH MIL-STD-130.
4. INFORMATION ENCLOSED IN PARENTHESES IS FOR REFERENCE ONLY.
5. UNLESS OTHERWISE SPECIFIED, DIMENSIONS AND TOLERANCES ARE EXPRESSED IN INCHES AND SHALL BE INTERPRETED IN ACCORDANCE WITH ASME Y14.5-2009.
- 6 DRILL POINT OPTIONAL, BRAEKTHROUGH PROHIBITED.



SEE PDM FOR DEFINING DATA